



EPOS Data Portal

Jan Michálek

University of Bergen

EPOS-BE Webinar

24 November 2023

EPOS Data Portal

Outline:

- 1. Introduction of the EPOS ecosystem (5 min)**
- 2. Demonstration of EPOS Data Portal by following a scientific user story (25 min)**

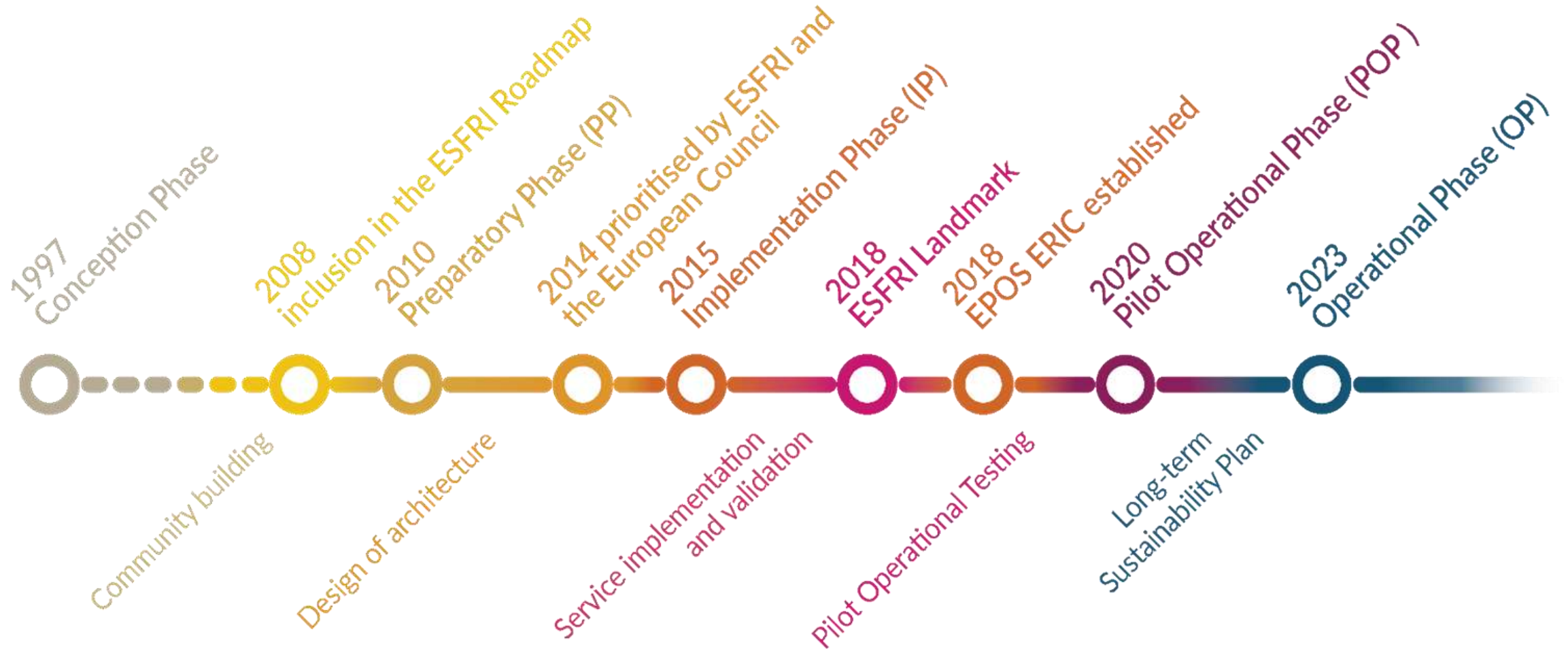
EPOS

EUROPEAN PLATE OBSERVING SYSTEM

MOVING TOWARDS GLOBAL SCIENCE

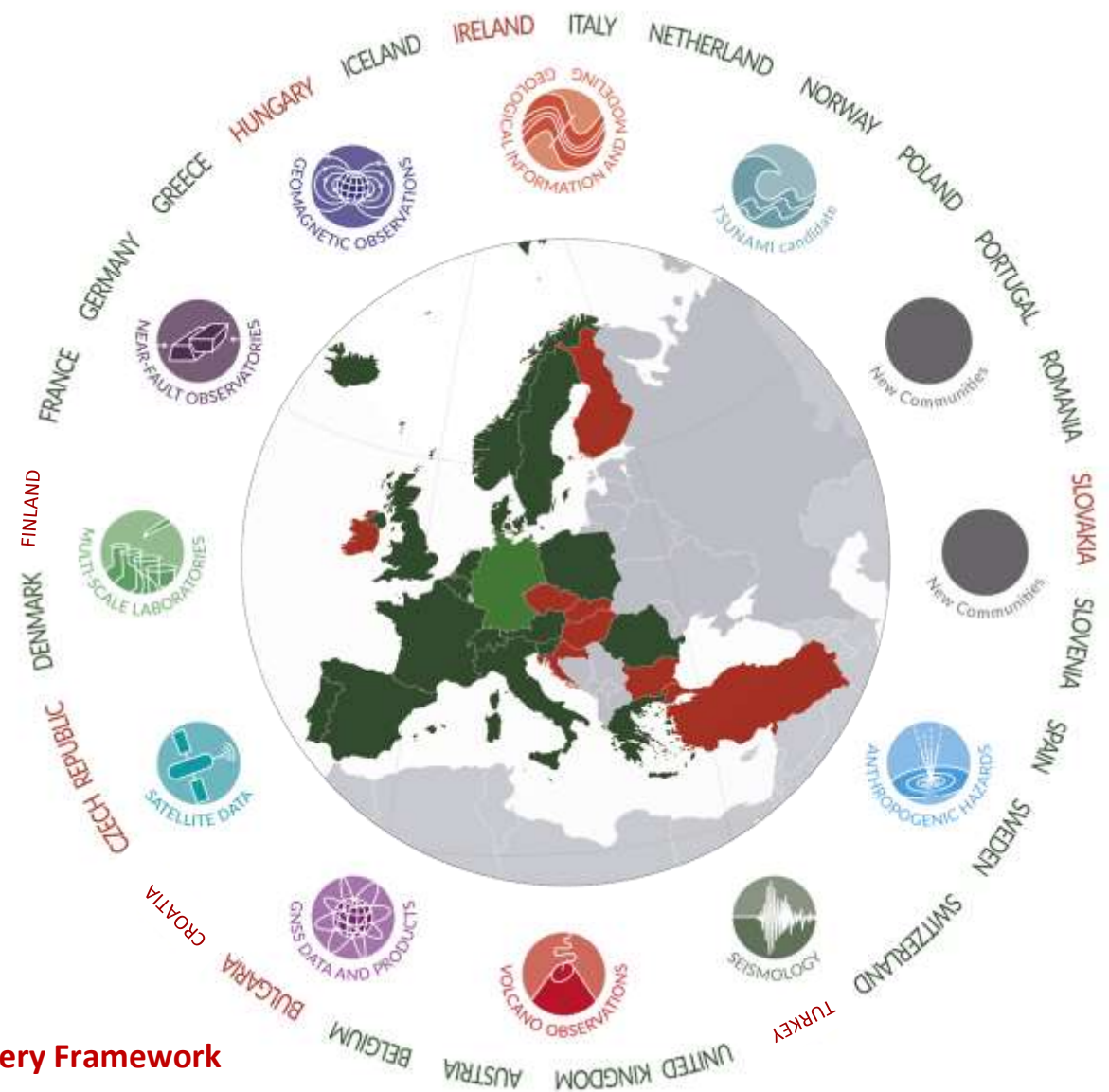
MISSION: To establish a sustainable and long-term access to solid Earth science data and services integrating diverse European Research Infrastructures under a common federated framework

EPOS Timeline



EPOS ERIC is a legal entity composed of 18 European countries

- The **legal form** adopted by EPOS is a “European Research Infrastructure Consortium” (ERIC).
- The role of the ERIC is to **operate** EPOS as a pan-European distributed research infrastructure (RI).
- The EPOS ERIC **legal seat** is in Italy (INGV, Rome)
- Overall, EPOS ERIC **ensures joint strategies** to achieve **scientific and technological innovation** across all stakeholders involved and tackles the **sustainability** challenge with harmonized approaches.



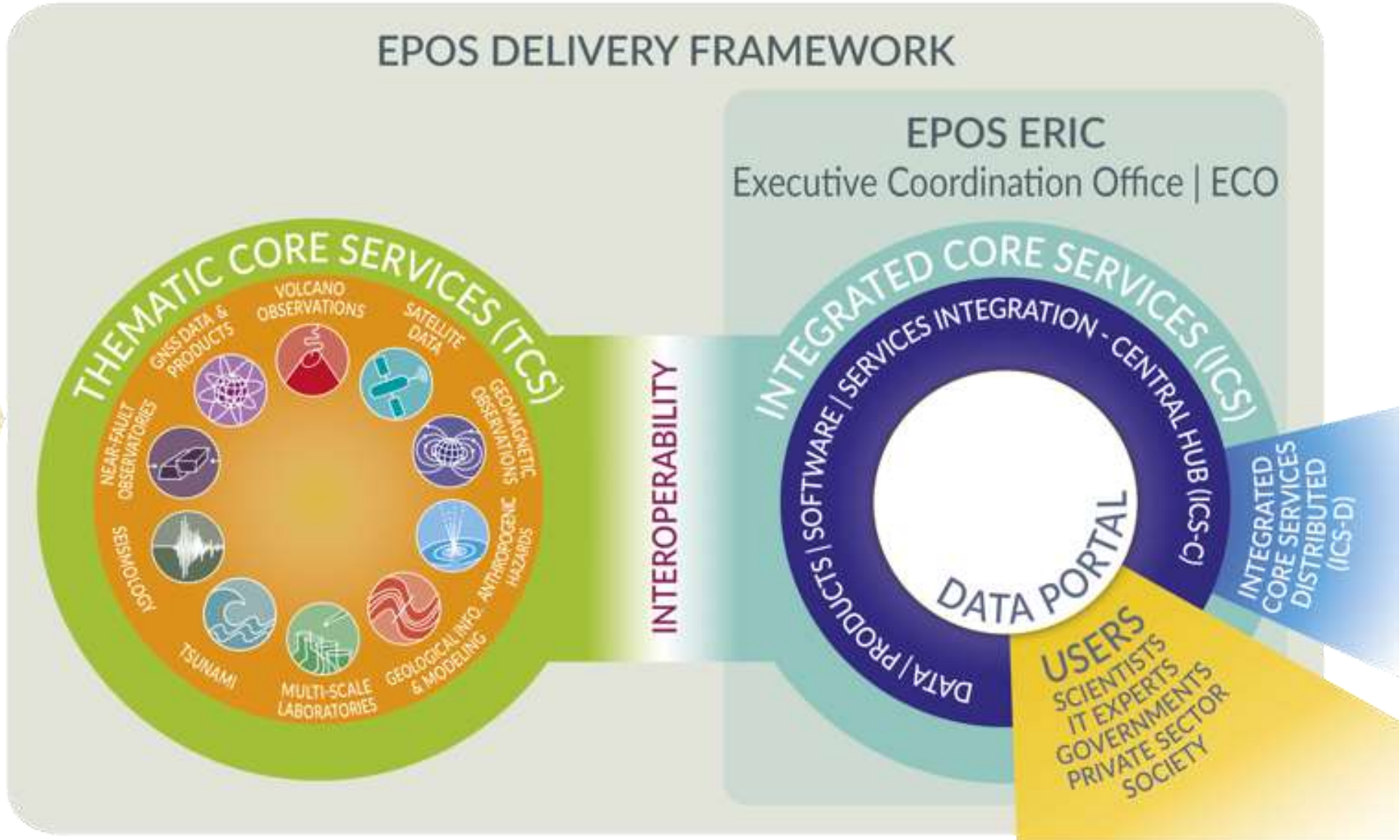
Status in September 2023:

In green country members (dark) and observers (light) of the ERIC

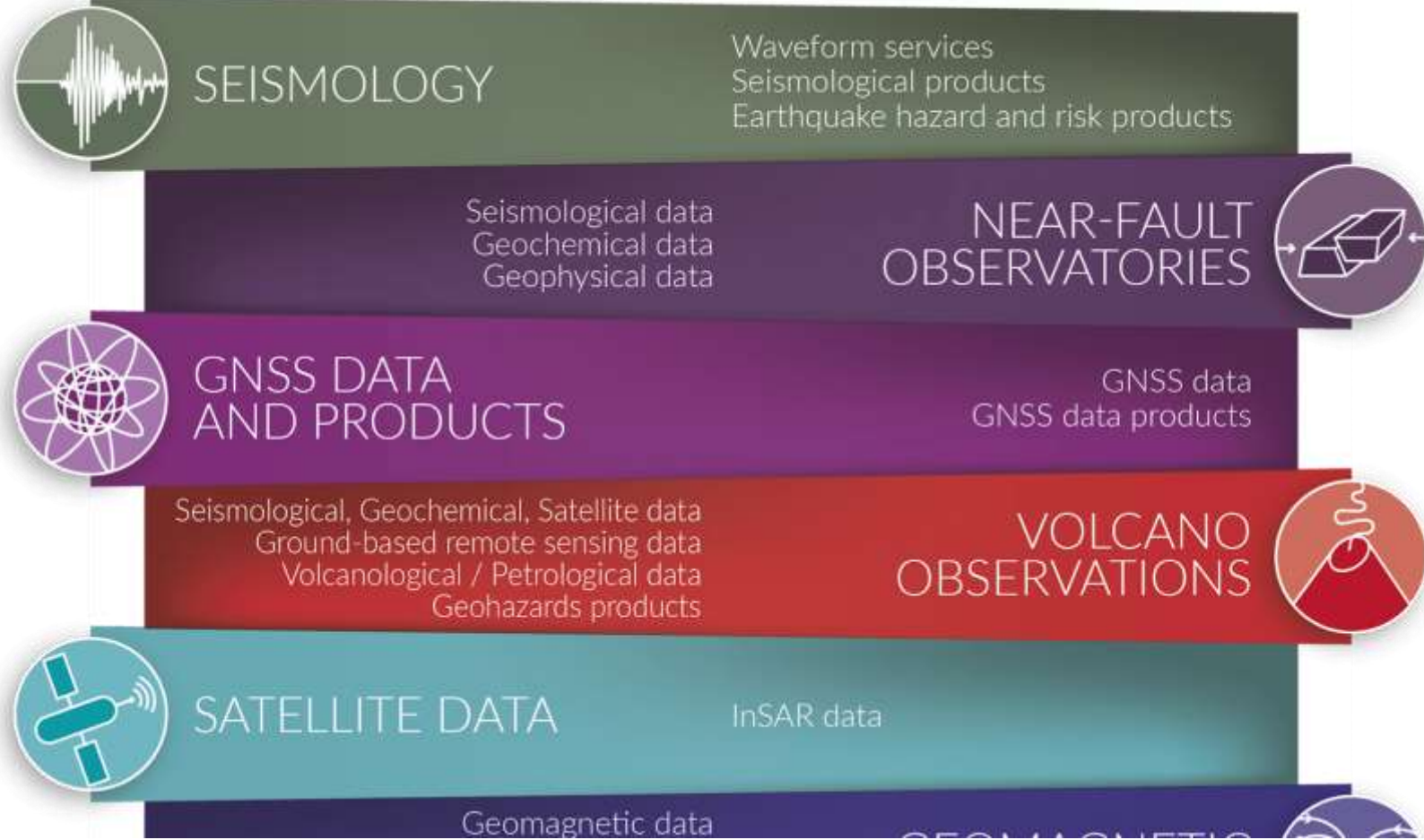
In red, countries not in the ERIC, but still participating to the EPOS Delivery Framework

The EPOS architecture

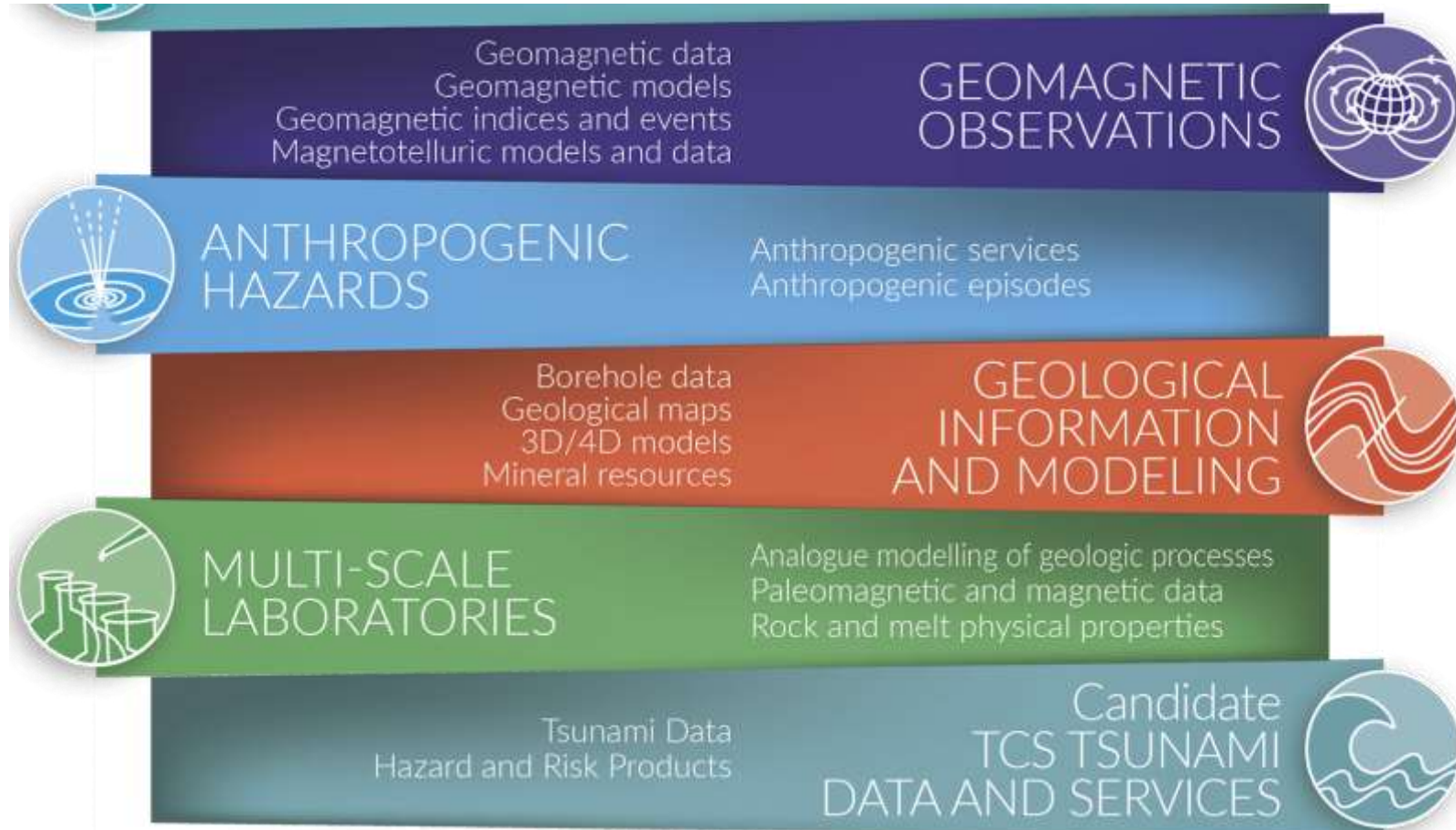
NATIONAL RESEARCH
INFRASTRUCTURES (NRI)
& DATA CENTERS



EPOS Thematic Core Services

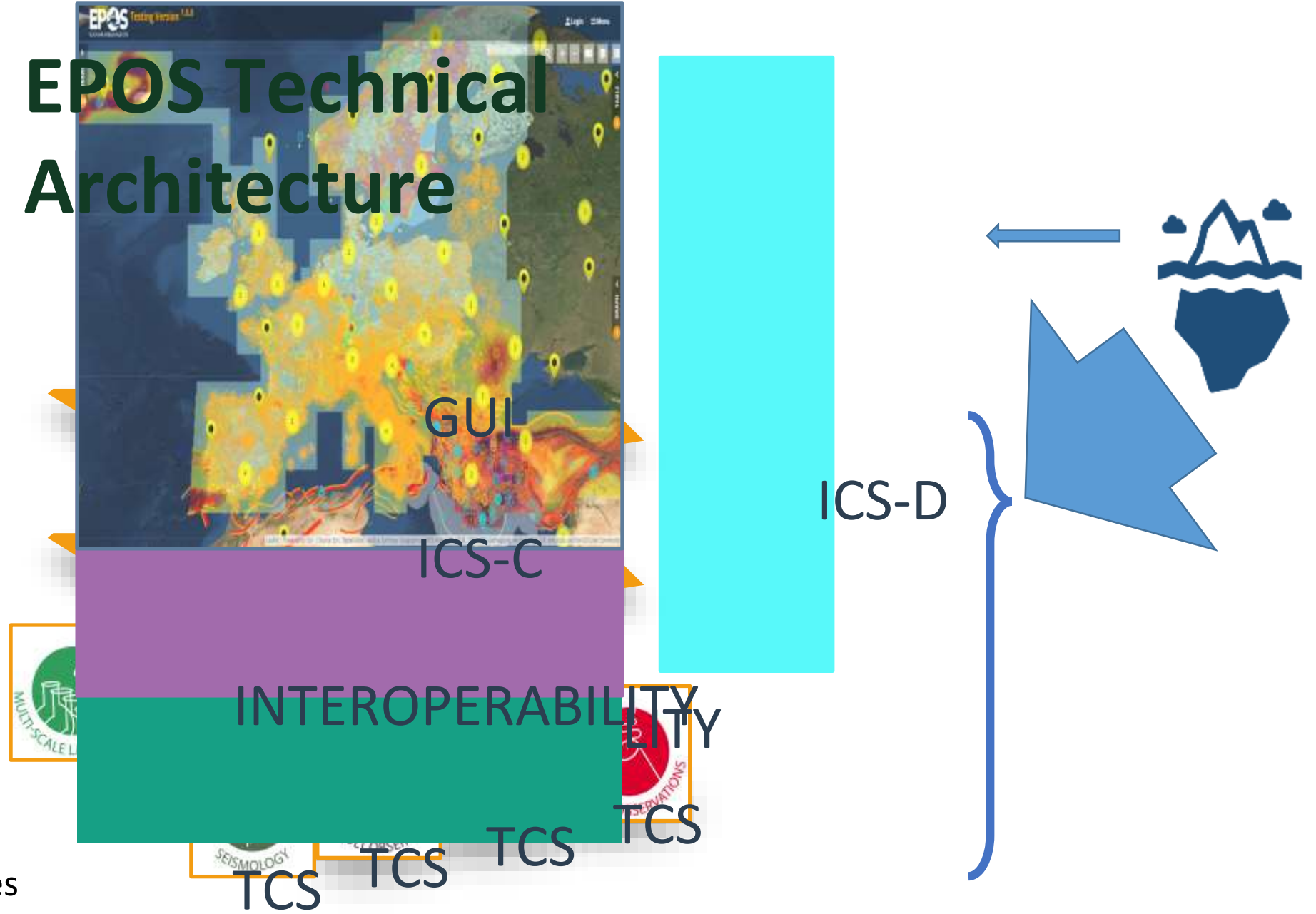


EPOS Thematic Core Services



EPOS Technical Architecture

How it works ...



TCS ... Thematic Core Services
ICS ... Integrated Core Services

Free text search

Filters

Favourites 6

Clear all favourites ✕

ESHM20 475 yr mean PGA hazard map (OGC WMS) i ★

Categories: Seismology > Earthquake hazard and risk ser... > Hazard products

Visible on: Map

Status:

European Database of Seismogenic Faults (OGC WMS) i ★

Categories: Seismology > Earthquake hazard and risk ser... > Seismogenic faults

Visible on: Map

Status:

GNSS Stations with Products i ★

Categories: Geodesy > Products > Station Information

Visible on: Map Table

Status:

Geological Feature View Service (EGDI Geological Map 1:1,000,000) i ★

Categories: Geology > Geological Maps

Visible on: Map

Status:

LOS Displacement Time Series i ★

Categories: Satellite Observations > InSAR

Visible on: Map Table

Status:

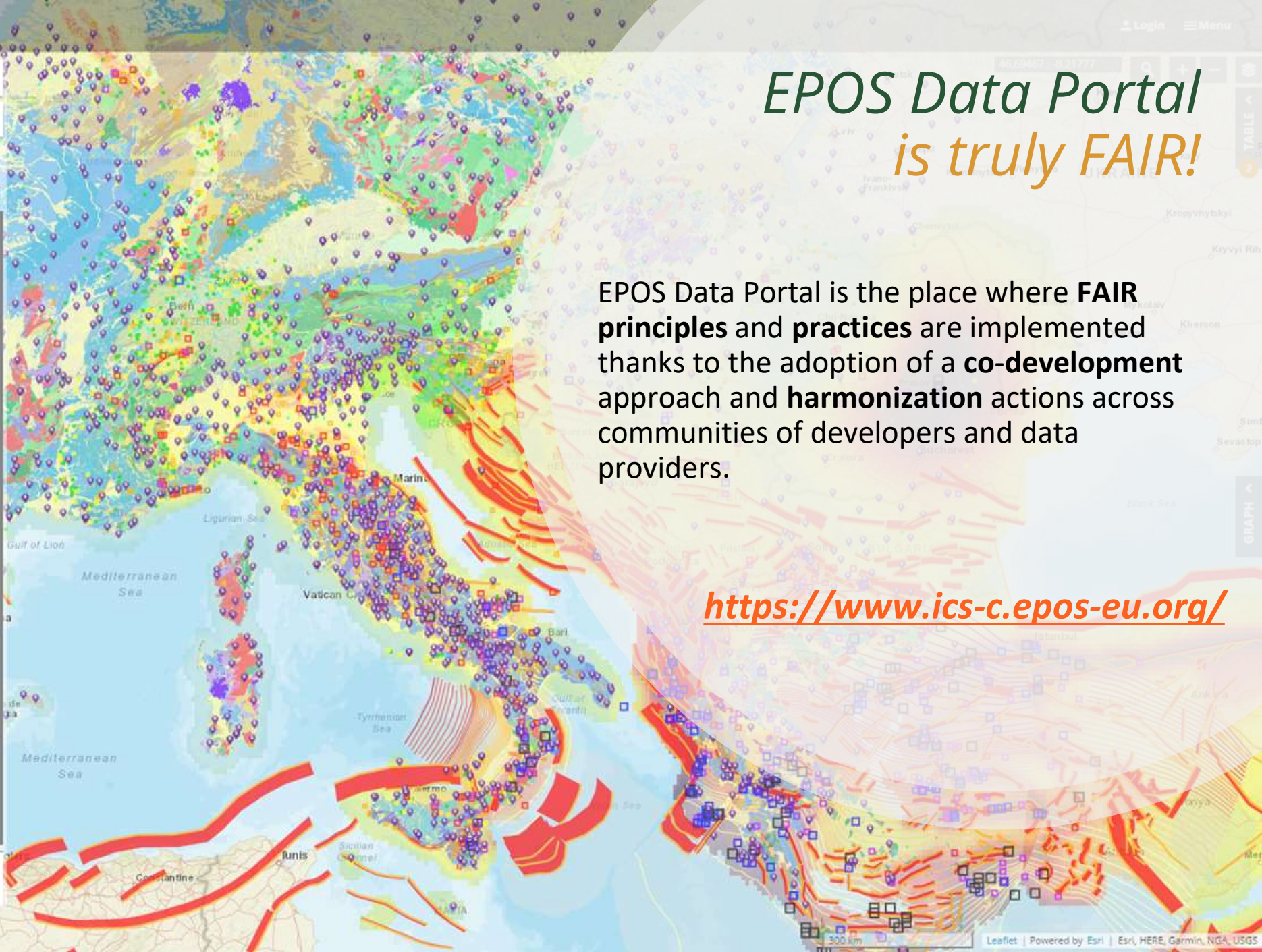
Parameters of historical earthquakes (1000-1899) - OGC WMS i ★

Categories: Seismology > Seismological products service... > Earthquake parameters

Visible on: Map

Status:

Results per page: 10 Page 1 of 1



EPOS Data Portal is truly FAIR!

EPOS Data Portal is the place where **FAIR principles and practices** are implemented thanks to the adoption of a **co-development** approach and **harmonization** actions across communities of developers and data providers.

<https://www.ics-c.epos-eu.org/>

EPOS Data Portal

Live demo



Try it! Use it!

ics-c.epos-eu.org



How can you contribute to EPOS?

- Provide high quality data (and metadata)
- Start using the EPOS Data Portal
 - Teaching
 - Outreach
 - Cross-disciplinary research requires knowledge of individual scientific domains ☐ learning ☐ requires time / steep learning curve
- Provide feedback